

# The Excel Window onto Corporate Data and Logic

# Spreadsheet Window

- Example:
  - logic: Brent expiries, pension thresholds
  - Data: salary rates, Cost allocation proportions
- How deep should the window be?
- The components:



# Spreadsheet only

- Single item
  - Advantages
    - Simple deployment
    - Complete
    - Auditable
    - Hard to lose source
  - Disadvantages
    - IP issues
    - Repeated
    - Updates need to be multiple, becomes painful
    - None pc form factors?

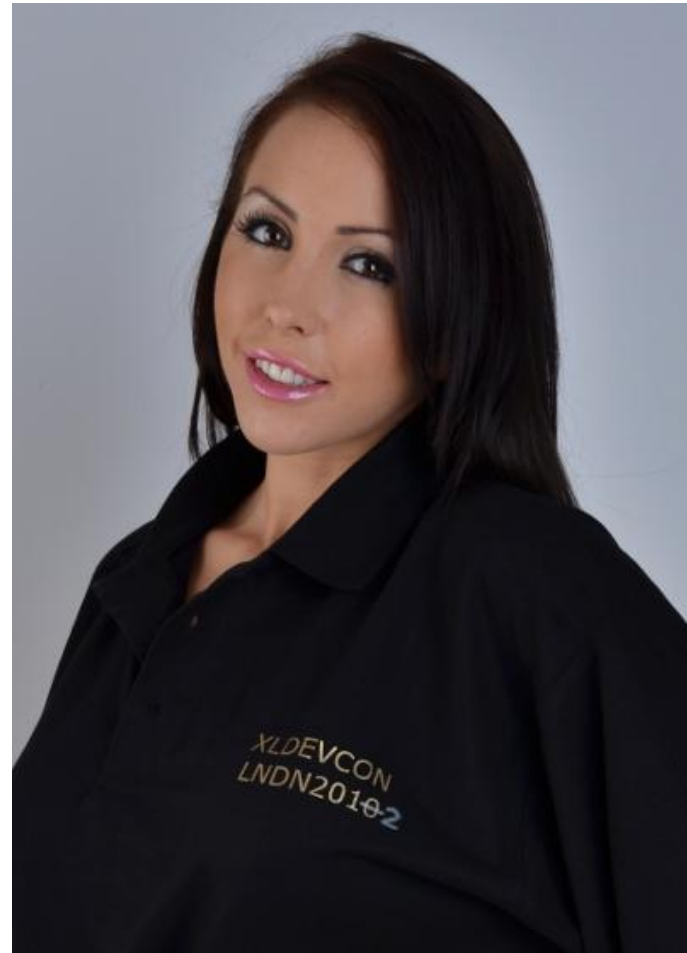
# Spreadsheet only



# Spreadsheet with some code



# Spreadsheet only



# Spreadsheet with add-in

- Share same code between multiple copies of spreadsheet
  - Advantages
    - Single version of logic / data
    - Updates can be targeted
  - Disadvantages
    - Multiple inter-related components
    - Deployment more complex
    - Updates must still touch each machine
    - Users need all components (support calls)
    - May need more than 2 components (eg UI)

# Base spreadsheet with logic and/ data access in separate add-in

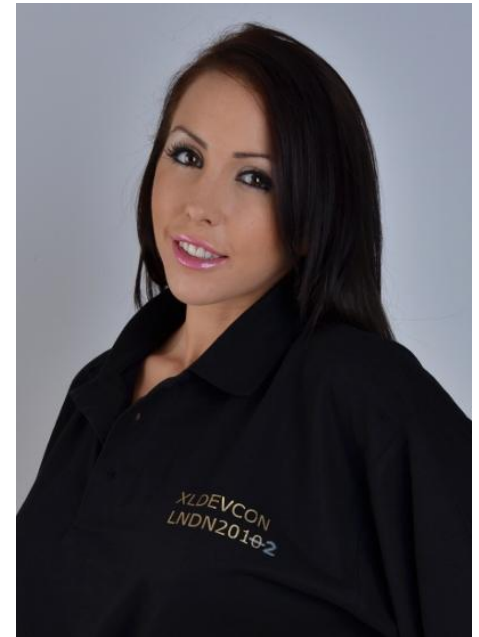




# Base spreadsheet with logic and/ data access in separate add-in



# Base spreadsheet with logic and/ data access in separate add-in (N tier)



# Base spreadsheet with logic and/ data access in separate add-in (N tier)

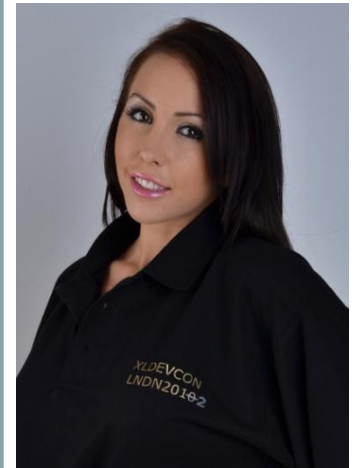
Db server



App server



User machine



# Base spreadsheet with logic and/ data access in separate (Server) add-in (N tier)

Db server



App server



User machine



# Server Spreadsheet

- Excel Services for example
  - Advantages
    - Remote so IP safer
    - No (client) deployment (just need a reader)
    - Central single maintenance point
    - Can serve new devices
  - Disadvantages
    - Non trivial to set up the infrastructure
    - No user audit
    - Impoverished UI compared to rich client like Excel
    - Limited user flexibility

# Server Spreadsheet

Db server



App server



User machine



# Web App

Db server



App server



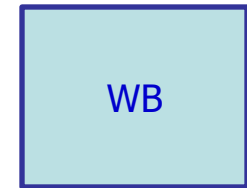
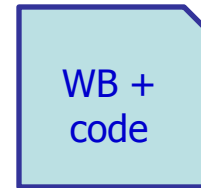
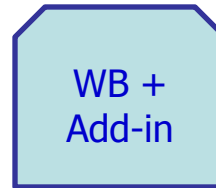
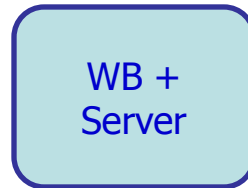
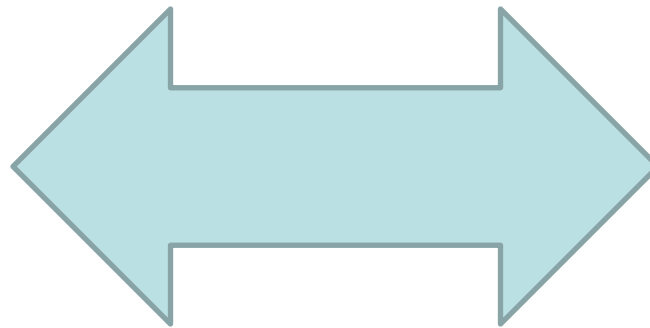
User machine



# Summary

- Server
- Web
- IT
- Technical
- Robust
- Slow delivery

- User
- Simple (initially)
- Maintenance hard





# Questions ?